

Product Information Bulletin

272

PlastiSpan Insulation – Exterior Foundation Application

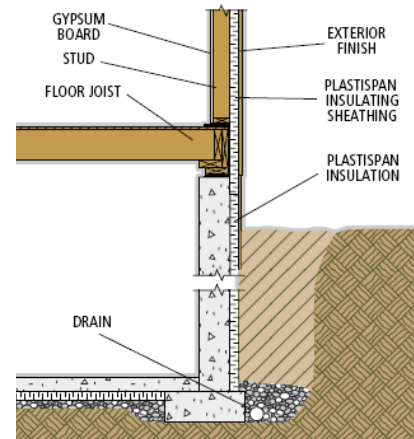
Product Information Bulletin

BULLETIN NO.	272
ISSUED:	May 19, 2011
REPLACES:	November 9, 2010

PlastiSpan Insulation - Exterior Foundation Application

PlastiSpan[®] insulation applied to the exterior of foundation walls ensures that the concrete is not subject to expansion and contraction caused by temperature differences between the interior heated space and the exterior air/soil temperature. As well, condensation will not form on the inner surface of the concrete wall because the surface will be at room temperature.

PlastiSpan insulation applied over dampproofing coatings protects the coating from damage. In addition, the surface of PlastiSpan insulation in contact with soil provides a capillary-breaking layer that directs water to the drainage tile.



Recommended Installation Requirements

1. Prior to installation of PlastiSpan insulation board apply dampproofing as required by the applicable building code. **NOTE: If an emulsified asphalt dampproofing is applied to the foundation wall, allow it to fully cure before application of PlastiSpan insulation.**
2. Install PlastiSpan insulation with the top edge placed flush with the underside of the sill plate and the bottom edge within approximately 13 mm (1/2-inch) of the top of the footing to facilitate drainage of water to the drainage tile. If required, dimensions of PlastiSpan insulation can be adjusted easily using a fine-toothed handsaw.
3. PlastiSpan insulation can be adhered to the foundation wall over the cured dampproofing using an insulation adhesive approved for use with EPS. Equally spaced walnut-sized spots of the adhesive should be applied to the insulation board.
4. PlastiSpan insulation is then adhered to the foundation wall by pressing firmly into place ensuring that the vertical joints between the insulation boards are butted tightly together.
5. If foundation waterproofing is required by the applicable building code, the exterior surface of the PlastiSpan insulation below ground level shall be waterproofed. A compatible self-adhering waterproofing membrane may be applied over the exterior surface of PlastiSpan insulation.
6. Place 100 mm (4") of coarse gravel against the bottom edge of the PlastiSpan insulation and over the drainage tile to tie in the drainage system at the base of the foundation wall.
7. The upper portion of the PlastiSpan insulation must be protected to 300 mm (12") below expected ground level.
8. One method of achieving this is to attach stucco mesh through the PlastiSpan insulation to the concrete using Gripcon fasteners with galvanized steel washers. Use galvanized diamond mesh reinforcing at corners or at openings. Apply 13 mm (1/2-inch) thick parging (2 coats) to the stucco mesh.
9. Appropriate flashing details must be incorporated at the top edge of the PlastiSpan insulation with flashing installed over the top PlastiSpan insulation and finished so the joint with wall finish is watertight.
10. Backfill the foundation wall with appropriate backfill material using normal equipment and operations. Complete finish grading so that soil is sloped away from the foundation.